



Heavy Duty. Light Work

GALAXY ATC is a heavy duty furnace that makes light work of all your firing jobs.

GALAXY ATC
Press includes dual
functionality; firing and
pressing All-in-One.

GALAXY ATC firing furnace

The Galaxy models are heavy-duty furnaces, ideal for a busy lab looking for a strong, reliable and consistent performance.

Built-in Setup programming options

- Five Fully Programmable Drying Steps comply with every type of ceramic and mixing liquid.
- Eliminates any risk of thermal shock.
- Four Pre-Programmable Cooling Steps give you full control of the entire cooling process.
- Full Control of Vacuum Firing.
- High flexibility to set up vacuum introduction or release at any time.
- Two-Step Delay – Enables you to create pre-programmed delay steps during firing, freeing you to do other things while the Galaxy does the work.

GALAXY ATC 'Clean and Easy' Display Features

- **Program Names Editor** for specific and easy identification.
- **A variety of user-friendly options:**
 - Temp. display in °C or °F., Vacuum display in mBar or mmHg, Multi-language support
- **Diagnostics Screen** gives full and comprehensive information about all functions and data.
- **List Screen** enables easy and informative program list monitoring.
- **Continuous LCD display** of all parameters and time remaining.
- **Help Screen** for every function.

shenpaz
electr^{therm} group



ATC Muffle



Press



LCD



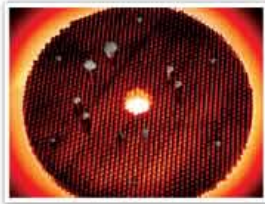
Full
Control



OPTIONAL ACCESSORIES

THERMAL TRAY

ShenPaz Thermo tray – made of special, lightweight dark metal alloy, the honeycomb tray has thermo-conductive properties, which allow for heat dispersion in the firing area (cervical and incisal areas will be evenly fired).



PRESSING CYLINDER 400 Gr

ShenPaz especially designed 400 gr. cylinder for pressing bridges or large elements over METAL or ZIRCONIA.



QUARTZ TUBE MUFFLE

ShenPaz first introduced the original Quartz Tube Kanthal Muffle more than 23 years ago. It has become one of the most reliable furnace components on the market. The muffle supplies homogenous heat radiation achieving optimal firing results and precise temperatures at cervical, body, and incisal areas

- High speed cooling – begin next cycle sooner
- Firing temp. up to 1180°C (2156°F) with heat rate between 10-120°C

Galaxy ATC Press

Designed by ceramists for ceramists, ShenPaz GALAXY ATC models offer you functional, 'clean and easy' graphics and a 7" LCD display benefits, together with ShenPaz patent-pending Accurate Temperature Control (ATC) muffle system, which ensures accurate firing results every time.

Technical Specifications

Measurements:
37 X 37 X 64 cm (14.5" X 14.5" X 25.5")
Weight:
23 Kg (51 lbs.)
Firing chamber:
Ø 95mm X 65mm/h (3.7" X 2.6")
Firing table:
Ø 90 mm (3.5")
Temperature range:
from 100°C to 1180°C (212°F to 2156°F)
Main Input:
200/240 Volt AC 50-60 Hz
110/120 Volt AC 50-60 Hz
Max. Power Consumption:
110V – 15A / 230V – 8A

For the GALAXY Press model

Pressure: 4.2 Bar **Weight:** 25.5 KG (56 lb)
All other specifications are identical to the standard Galaxy ATC.

Steps of delivery:

- 1 furnace unit
- 1 control connecting cable power unit
- 1 ceramic table
- 1 pair of furnace tweezers
- 1 operating manual
- 1 lift key
- 1 spare fuse

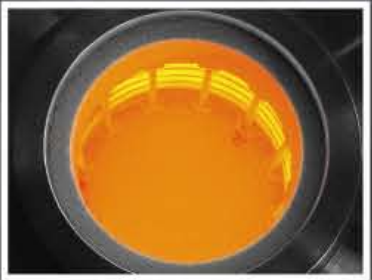
Additional items for the GALAXY Press model

- 1 press ceramic table
- 1 press kit with cylinders sizes of 100gr., and 200gr. + 2 alumina plungers
- 1 connection air pressure tube

The Heart of the Galaxy

ShenPaz unique muffle, with its Advanced Temperature Control (ATC) technology, gives you the fullest confidence in your firing results.

With no quartz barrier, the muffle facilitates direct radiation on your ceramic surface, giving you optimal translucency and vitality. Its long lifespan ensures the achievement of uniformed firing results time after time.



ATC Muffle

ATC Muffle for Precision Performance

- Totally uniform heat distribution.
- Precise temperatures at lower, middle and high levels.
- Enhances productivity with high speed cooling (furnace head cools quicker so you can start next cycle sooner).
- Firing temperature up to 1,180°C (2156°F), with heat rate between 10-120 °C (50-248° F)/min
- Durable Kanthal spiral material.



Pressing Unit

Kanthal is the brand for Sandvik's heating technology products

Features to facilitate your work

- **Temperature Adjustment**
Complete manual temperature control at all stages of the process.
- **Automatic Night Mode**
You can leave your program working and leave the GALAXY unattended. When the cycle is over, your GALAXY will automatically switch to the night mode temperature (100°C/ 212°F), preventing any moisture accumulating in the muffle.
- **Precise Vacuum Calibration**
maintains accurate translucency and vitality and eliminates over-brightness or cloudiness.
- **COPY Program** saves you an immense amount of time – plan it once and copy it with one press of the key.
- **Change Options** throughout the cycle.
The HOLD function means you don't have to abort the whole operation and start again. Minimizing your margin of error!
- **Pre-Heating Function** for soaking at the starting temperature, after the muffle is closed.

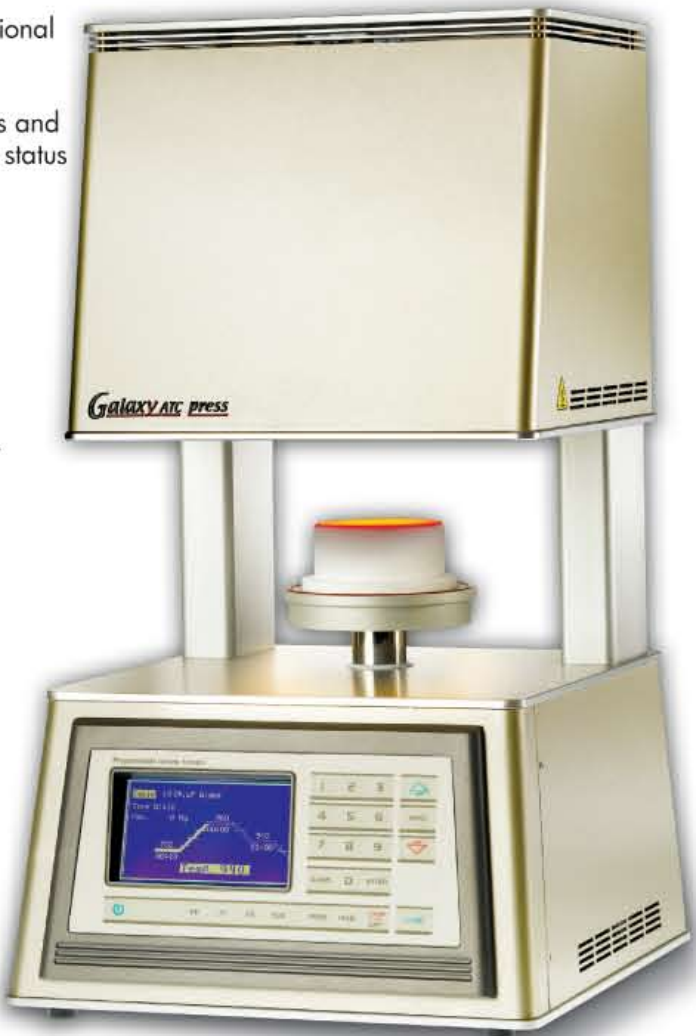
Galaxy_{A.T.C.press}

The **GALAXY ATC** Press not only fires all low fusing and normal ceramics, but also presses ceramics with constant temperature and press control.

ShenPaz non-aggressive "pressing steps" technology implements a special sensor to soften the "one-blow impact" achieving greater density and improved hardness.

This pressing method ensures a higher rate of success when pressing over **ZIRCONIA** and **METAL**.

- 200 programs – 180 for conventional ceramics and 20 for pressables
- Complete control over the process and the display indicates the pressure status in real time at all stages. Reduces errors to almost zero.
- Choice of activating a pressing sensor to maximize the pressing duration automatically will terminate the press at the most advantageous time to avoid unnecessary firing and split rings.
- Presses two or three colors in the same cylinder.





Ask your dealer about our other dental laboratory furnaces.
To contact a dealer in your area, e-mail us at: shenpaz@shenpaz.com
or send a fax to +972 4 6042040

shenpaz
electr^otherm group

Electrotherm Marketing (1978) Ltd.

ShenPaz Technologies Division

5 HaTasia Street

Ramat Gabriel Ind. Park, Migdal HaEmek 23101, Israel

Tel: +972 (0)3 562 0428 Fax: +972 (0)4 6042040

Shenpaz@shenpaz.com

www.shenpaz.com